

dimLED Kabel mini USB to DMX

**Thank you for choosing to use our product
Please read carefully the manual before using.**

Feature:

- (1) USB DMX Interface.
- (2) Micro processor enabled.
- (3) Supports Various 3rd party softwares.
- (4) Internal frame buffering.
- (5) Drivers for Windows.
- (6) DMX512 times configurable.
- (7) Support Windows XP、 Vista、 Windows7(32bit and 64bit)

This works for example with:
Freestyler

If you want to know more, please refer to the disc's video、 Freestyler software "help menu"、 www.freestylersupport.com、 www.youtube.cometc.

Install 1 (Apply to Windows XP、 Vista、 Windows7)

- 1、 Insert the usb to dmX interface device to computer USB port.
- 2、 The computer detect find out new device hardware.
- 3、 Select the computer ,click the right mouse button,choose"device Manager".

- 4、 You can see the"udmx"icon is yellow exclamation point.
- 5、 Click the "udmx",choose update driver software.
- 6、 On the pop up window ,choose "browse my computer for driver software".
- 7、 Select the location of the drive directory from the cd disk.
- 8、 Click next to install,if computer has pop-up prompt window,then choose "install this driver software anyway"
- 9、 After successful installation,in the device Manager"udmx"icon is without yellow exclamation point,it mean USB to dmX interface device successful installation.
- 10、 Install the computer software - Freestyler

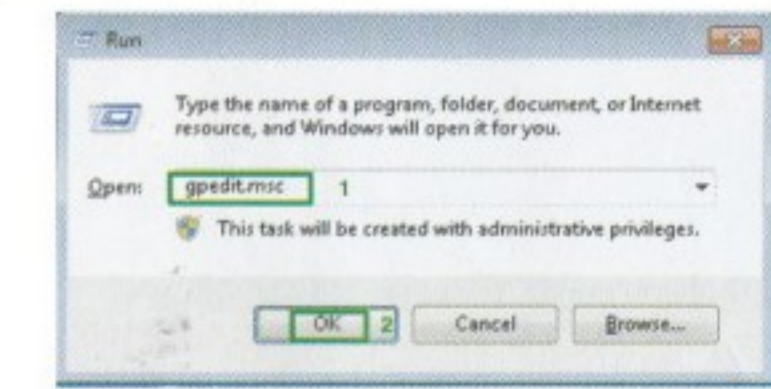
The above installation steps , you can also watch the installation video which on the cd disk.

Install 2 (Apply to Windows7、 Window8、 Windows10)

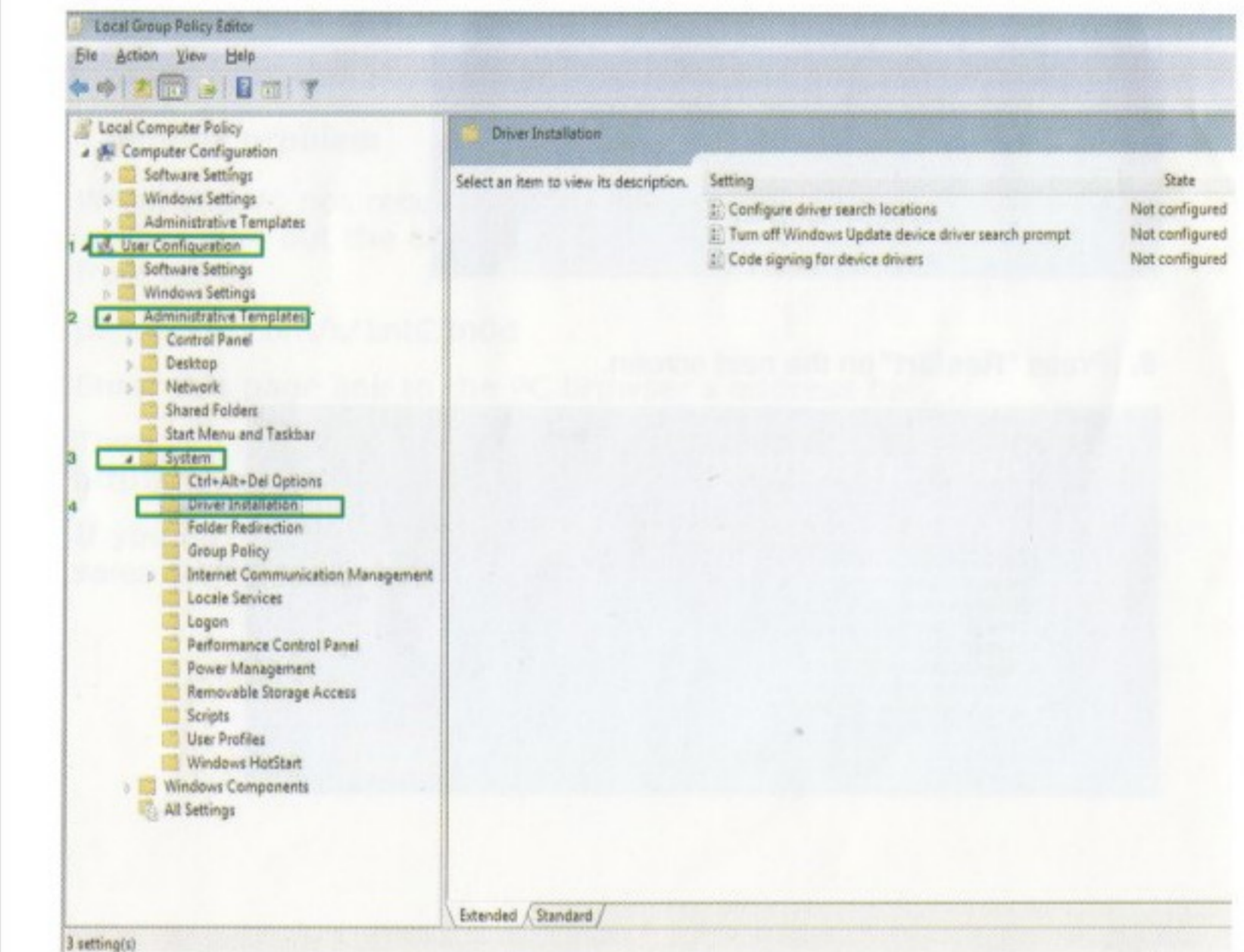
Note:The driver can only be installed in some window8、 Windows10 system version,whether the installation success depends on your computer and system version.

Windows7

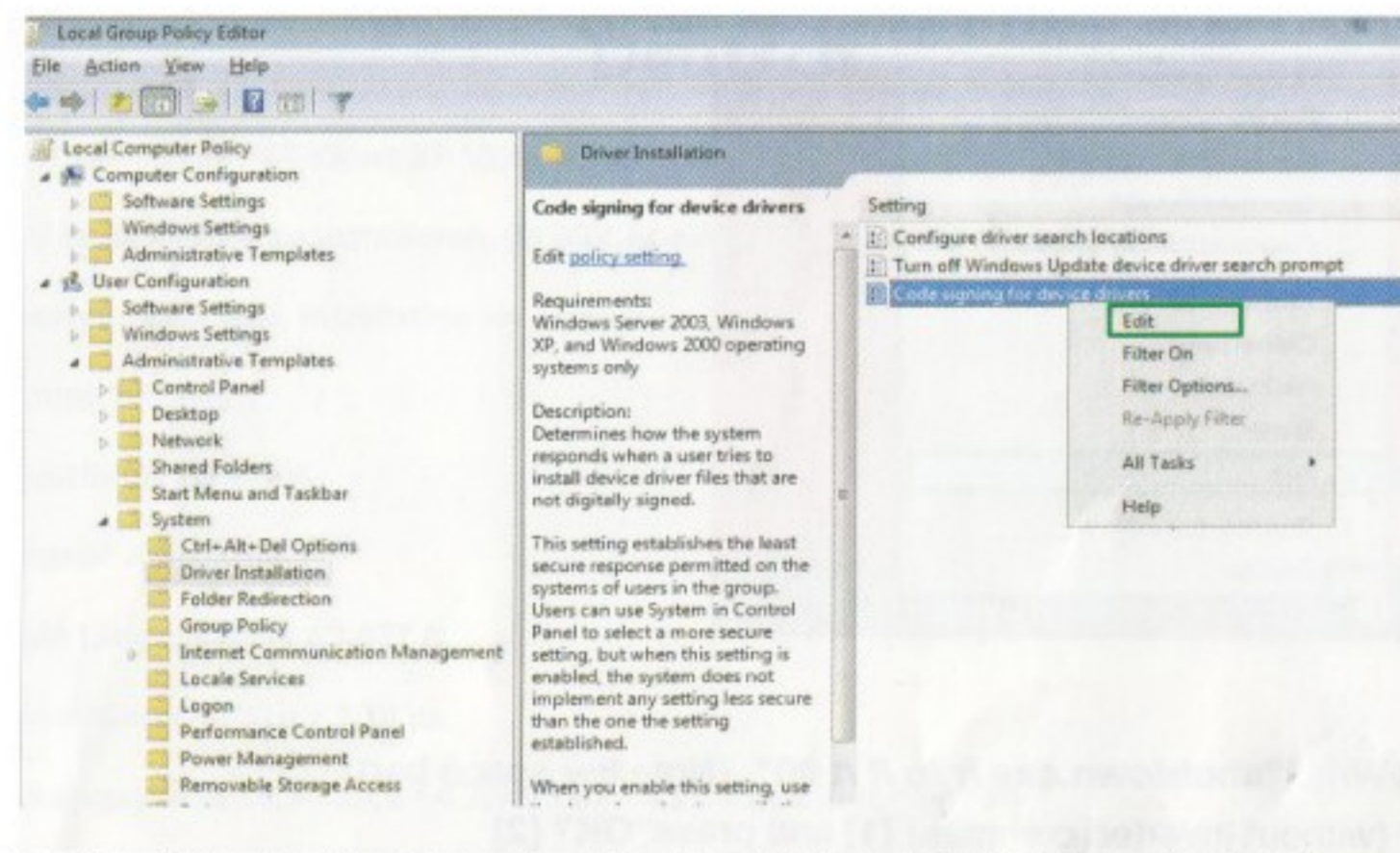
- 1.Open **Start/Run**
- 2.Write "**gpedit.msc**"(without inverted commas)[1]and press"**OK**"[2]



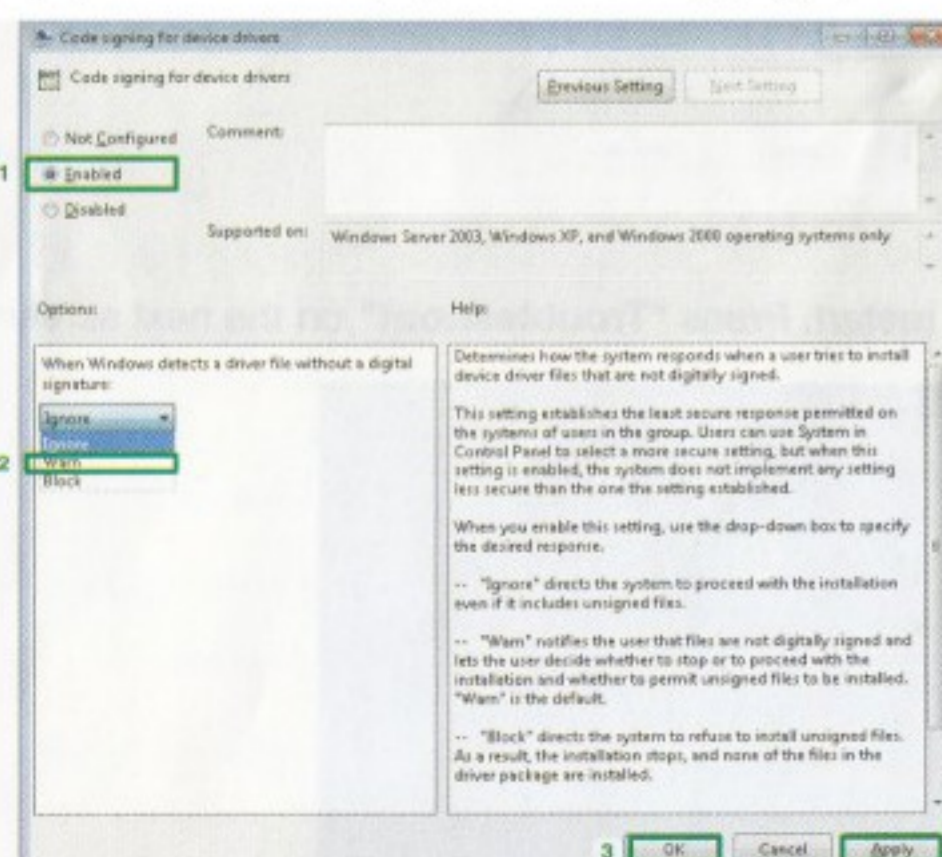
- 3.On the next screen select: "**User Configuration**" [1]/"**Administrative Templates**" [2]/"**System**" [3]/"**Driver Installation**" [4]



- 4.Right click on "**Code Signing for Device Drivers**" and select "**Edit**"



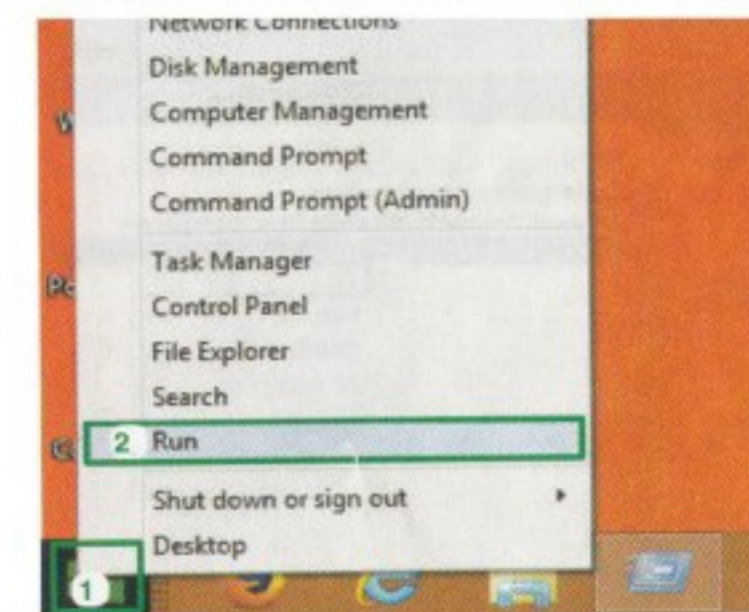
- 5.In the "**Code Signing for Device Drivers**" window,choose "**Enabled**" [1]and "**Warn**" [2]and click "**Apply**", "**OK**" [3].



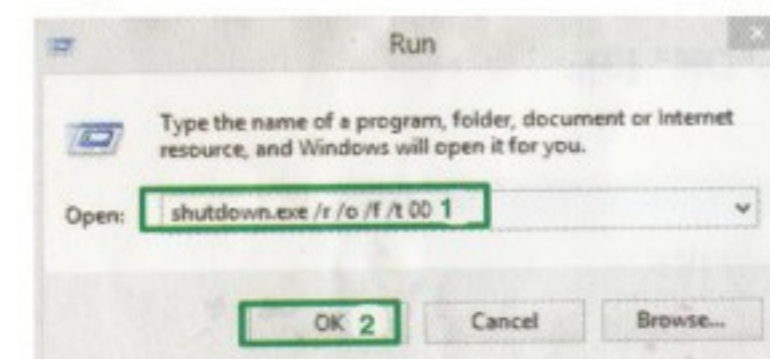
- 6.Restart your computer to install unsigned drivers.

Windows 8 and Windows 10

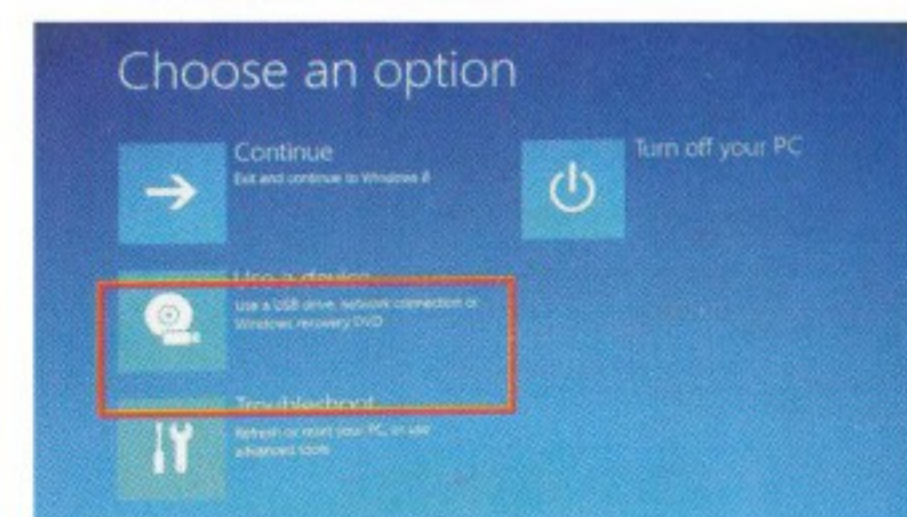
- 1.Right click on **Start**[1]and choose **Run** [2]



- 2.Write "**shutdown.exe /r /o /f /t 00**" (Note the space bar) (without inverted commas)[1]and press "**OK**" [2]



- 3.Wait for System restart.Press "**Troubleshoot**" on the next screen.



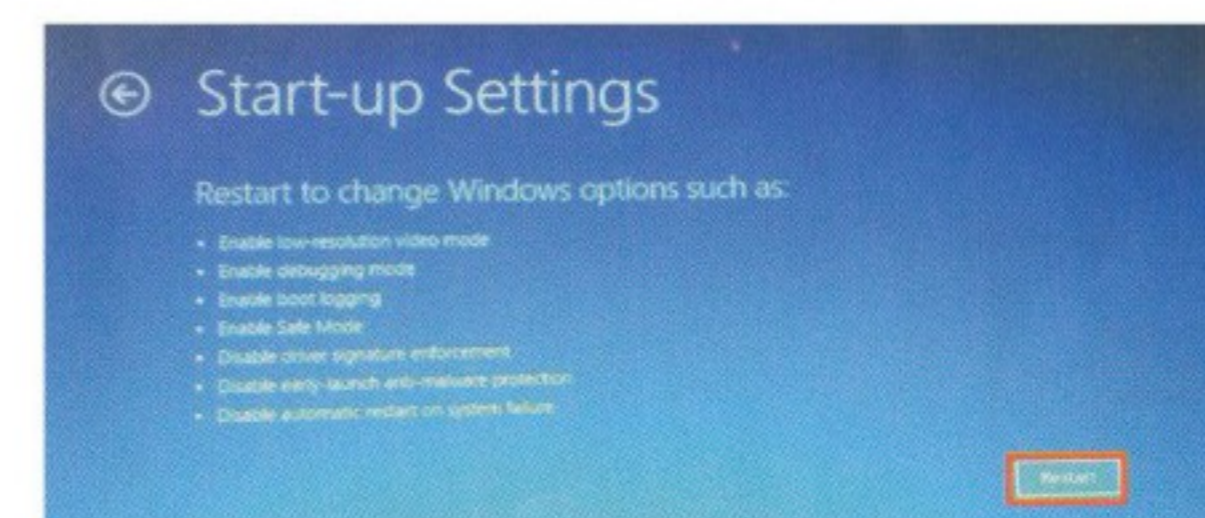
- 4.Press "**Advanced Options**" on the next screen.



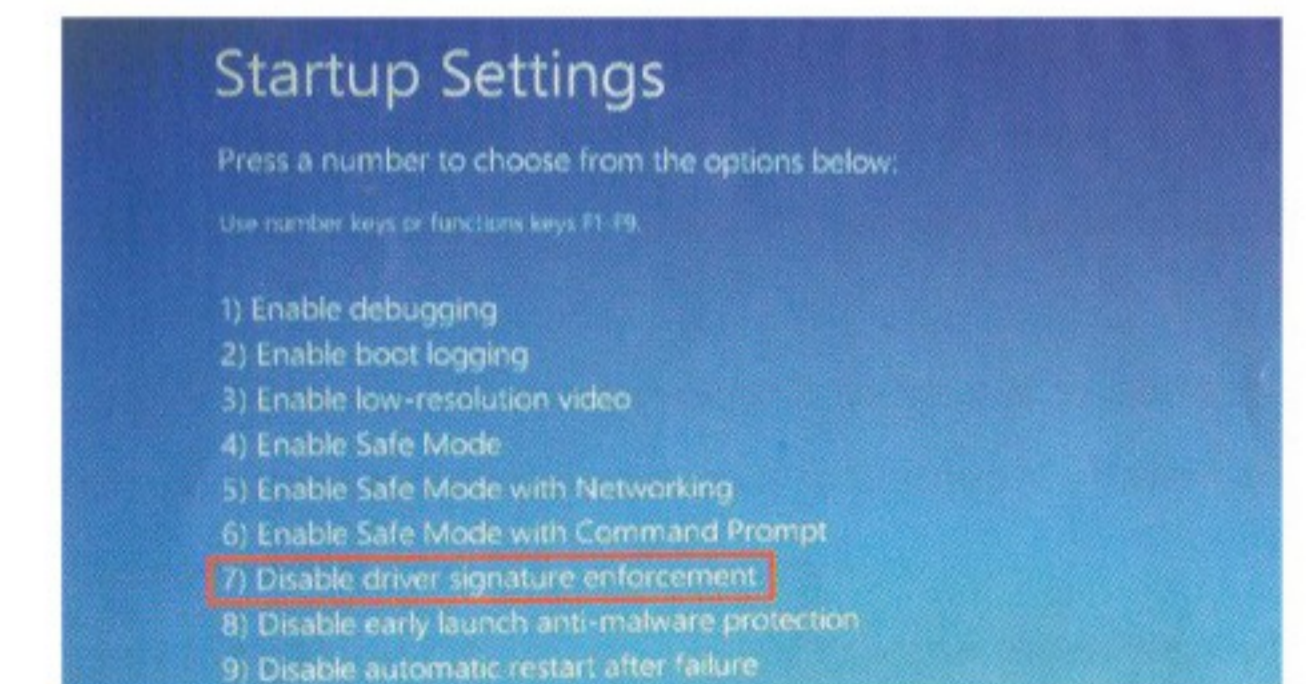
- 5.Press "**Start-up Settings**" on the next screen.



- 5.Press "**Restart**" on the next screen.



- 7.Wait for System restart.Press **F7** key to "Disable Driver Signature Enforcement"



- 8.Wait for the complete System restart.
Then follow the above "Install 1" to complete driver installation.